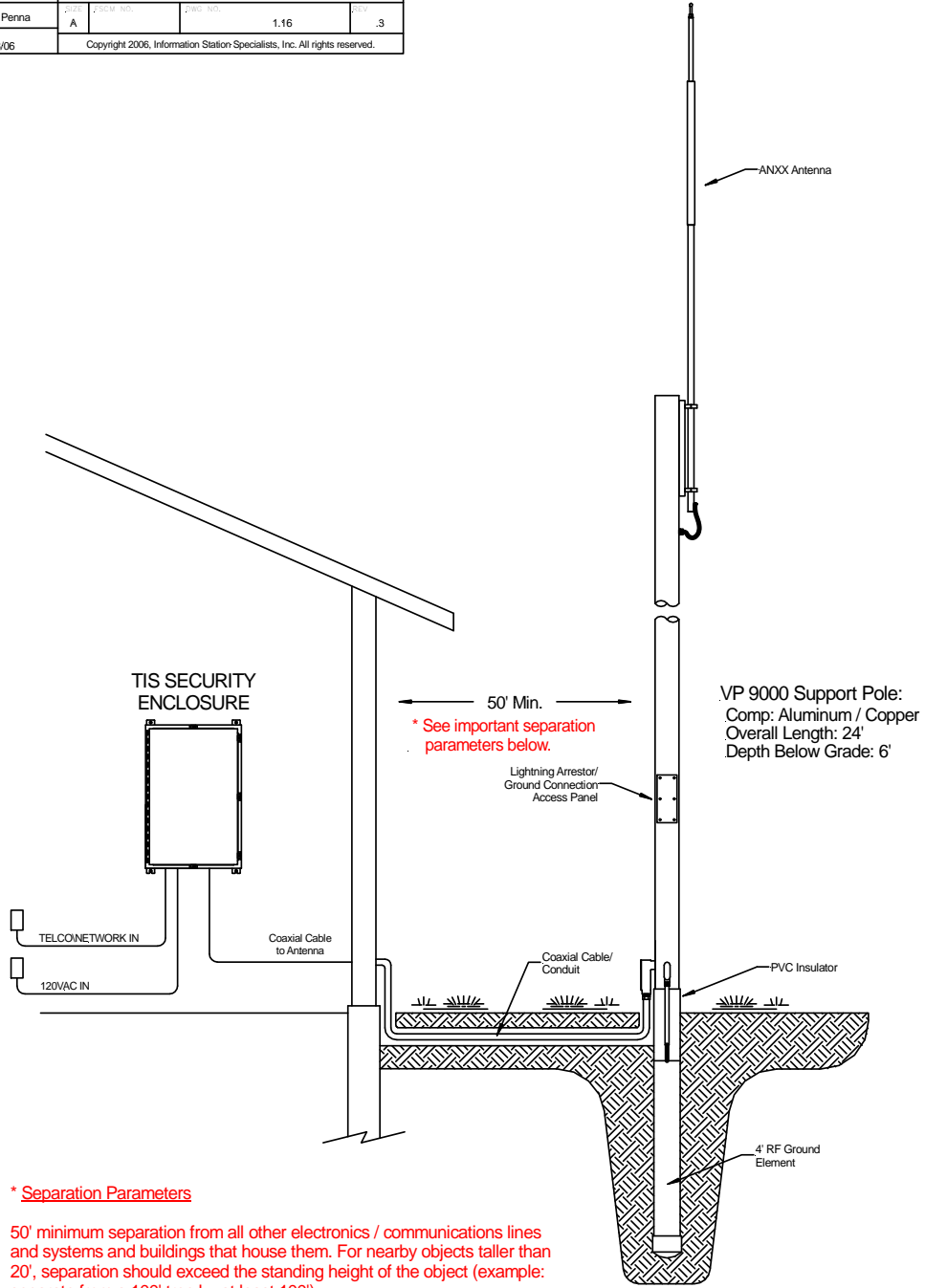


1. COMPANY		Information Station Specialists, Inc.	
2. APPROVED	3. SHEET	2. DESCRIPTION	
	N/A	TIS / VP9000 Yard Installation - Elevation View	
4. DRAWN BY	5. DATE	6. SCALE	7. DATE
Geoff Penna	08/06	A	1.16
8. REVISIONS			
9. NOTES			
Copyright 2006, Information Station Specialists, Inc. All rights reserved.			



*** Separation Parameters**

50' minimum separation from all other electronics / communications lines and systems and buildings that house them. For nearby objects taller than 20', separation should exceed the standing height of the object (example: separate from a 100' tree by at least 100').